

# laSalle

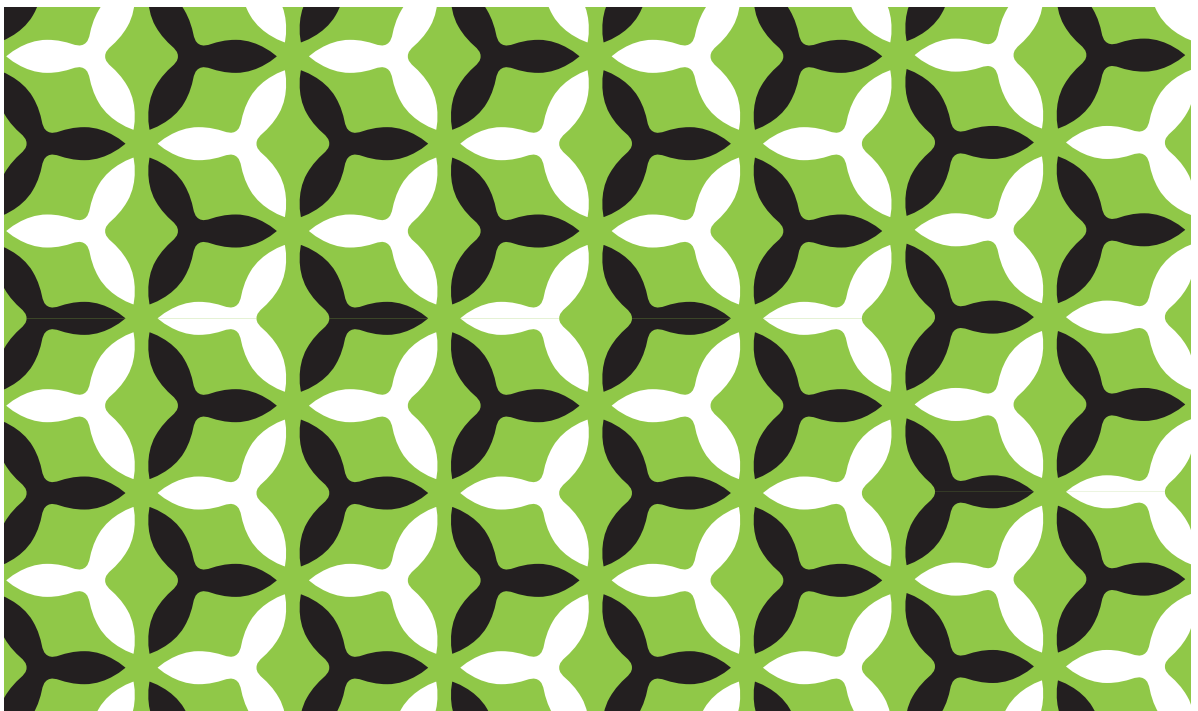
## Architecture and Urban Design

MIAD

Master in Integrated Architectural Design

DPIA

Ph.D. in Integrated Architectural Design



MASTERS & PhD

# MIAD

## Master in Integrated Architectural Design

**The Master in Integrated Architectural Design is a post-professional degree intended for individuals who have completed an undergraduate professional program in architecture or its equivalent.** The objective of the program is to provide advanced students or young professionals with the opportunity to engage in postgraduate study that encourages critical thought in the context of architectural design.

The program will attempt to blur the line that separates professional and academic concerns, exploring their fertile intersections. The program promotes innovative architectural design integrated with the wide range of skills and technical and cultural knowledge that contemporary architecture demands.

With an experimental ethos, the program emphasizes a heteronomic take on architectural design; in other words, it recognizes the relevance of a wide body of knowledge that is

external to architectural design discipline and yet it is fundamental in order to engage a contemporary renewal of the role of architecture. Integrating within architectural design inputs from building technologies, environmental analysis, mapping practices, advanced diagramming, representational techniques, social studies, theoretical speculation, conceptualizing tools and so on, allows the program to foster innovation within the discipline. Aware of the need for grounded experimentation, architectural heteronomics thus promotes an architecture that can be shared and contested in order to continually advance into new territories.

Overall, the program emphasizes an integrated approach to architectural design and research, resulting in a commitment to design excellence that demands not only the skillful manipulation of program and form, but also inspiration from a broad body of knowledge.

### Objectives

- 1 Explore architectural design integrated within a broad body of knowledge.
- 2 Address architectural heteronomics as a central research horizon.
- 3 Engage in a multi-scalar curriculum.
- 4 Activate a skill range that runs from the initial concept to detailed design.
- 5 Promote innovation critically engaging both traditional and new technologies and approaches.
- 6 Take advantage of Barcelona as an architectural laboratory.

### Entrance Profile

- Architects, engineers, designers

### Skillsets

Master seeks that of these graduates acquire an accelerated experience in the comprehensive implementation of projects through participation at all scales involved, to allow his vision of detail and set simultaneously.

### Degree

Students who finish and satisfactorily complete the program will receive the degree of Master in Integrated Architectural Design, La Salle - Ramon Llull University and Bologna official qualification that enables access to zdevelop a doctorate or Ph.D.

<b>TIME PERIOD</b>	1 year
<b>SCHEDULE</b>	Begin in September o January Monday to Friday from 18h-21h 60 ECT

# Academic Program

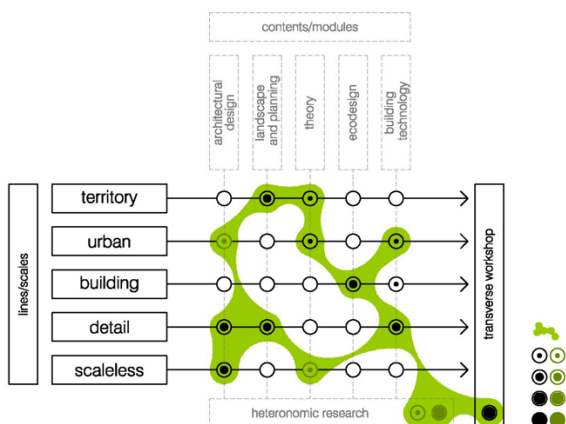
The Master's degree is structured into five main lines which are defined according to scale; each one is coordinated by a specific professor. The five lines are:

1. Territorial scale
2. Urban scale
3. Building scale
4. Detail
5. Scaleless

This idea is intended to support the education of a total architect: a professional who should be able to control all the stages of project development, from the initial concept to the design detail. The aim of the Master's program is to ensure that the architect is equipped to develop a global design, at every scale of the process.

The five scalar lines are then intersected by five subjects, which cover the essential elements of architectural activity. These five subjects are: design, theory, structural engineering, services installations and building technology. The intersection between the subjects and the scale lines creates a matrix which provides a flexible structure for incorporating other postgraduate programs and specialized courses within the same framework, counting on the collaboration of specialists and other professionals in the discipline.

BASE	14 ECTS
Transverse Scalar Workshop	14 ECTS
<b>MODULAR SCALE</b>	<b>30 ECTS</b>
Territorial scale (XL)	6 ECTS compulsory
Urban scale (L)	6 ECTS compulsory
Building scale (M)	6 ECTS compulsory
Detail scale (S)	6 ECTS compulsory
Scaleless (SL)	6 ECTS compulsory
<b>OPTIONAL</b>	<b>10 ECTS</b>
<b>FINAL MASTER THESIS</b>	<b>6 ECTS</b>
<b>MIAD</b>	<b>60 ECTS</b>



# DPIA

## Ph.D. in Integrated Architectural Design

Upon completion of 60 credits of the master, you can access to the investigation period. These are 12 ECT credits until the completion and defense of the doctoral thesis.

## Research stage

It mainly consists on the development of the doctoral thesis, which is an original and or unpublished research. Once following the period of training, the student will have already chosen a specific line of work, and it will be trained to undertake the process of the doctoral thesis.

To complete this process, the doctoral student is linked to a research group that develops academic activities (seminars, conferences, congres, etc.).

### ● ARC Representation Computing Architecture

It is a research group interdisciplinary dedicated to the integration of technologies information and communication architecture.



### ● IAM Mediterranean Architecture Research

It aims the study of Mediterranean architecture in project scope, technology and territory.





laSalle

Ramon Llull University

LaSalle  
Universities

[www.BESLaSalle.net](http://www.BESLaSalle.net)

[www.mbalasallebarcelona.com](http://www.mbalasallebarcelona.com)

[Blogs.salleurl.edu](http://Blogs.salleurl.edu)

[YouTube.com/LaSalleBCN](https://YouTube.com/LaSalleBCN)

[Facebook.com/LaSalleBCN](https://Facebook.com/LaSalleBCN)

[Twitter.com/LaSalleBCN](https://Twitter.com/LaSalleBCN)

[Linkedin.com/company/la-salle-bcn](https://Linkedin.com/company/la-salle-bcn)

Skype: masterslasallebcn

CAMPUS BARCELONA

Sant Joan de La Salle, 42. 08022 Barcelona

+34 932 902 419

[admissions@salleurl.edu](mailto:admissions@salleurl.edu)

Acreditations:



Qualifications:



Aristos  
Campus  
Mundus

Campus de  
Excelencia  
Internacional

Members of:



EFMD



for Q